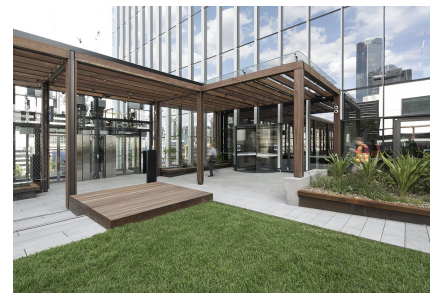


1 Melbourne Quarter - Level 2 Entrance

Case Study



When you walk up the two level spiral staircase at One Melbourne Quarter you are greeted by a beautiful sky garden oasis as well as a record Diamond Series revolving door at the main entrance to the Arup Melbourne office.

With much lower pedestrian traffic flows, a manual revolving door was deemed a practical and cost effective solution to providing an airlocked entrance. As the internal half of the revolving door glass roof is very close to the ceiling finishes, a white film was applied to minimise future cleaning requirements.

1 Melbourne Quarter - Level 2 Entrance

Case Study



1 Melbourne Quarter - Level 2 Entrance

Case Study



1 Melbourne Quarter - Level 2 Entrance

Case Study



1 Melbourne Quarter - Level 2 Entrance

Case Study

