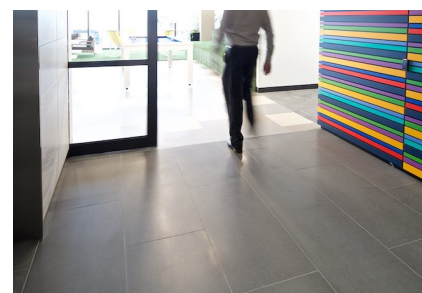
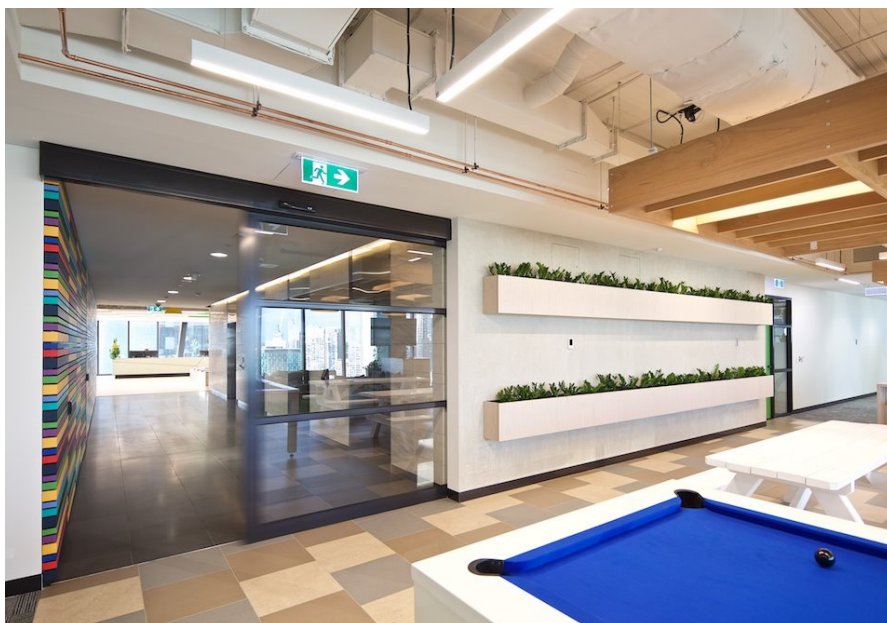


Level 20, 567 Collins Street, Melbourne

Case Study



The Melbourne office fitout of finance company Connective, designed by Gray Puksand, is a modern, vibrant and colourful workspace with a generous staff recreation and kitchen space.

For the staff only entrance from the lift lobby to this space, record Automatic Doors supplied and installed a heavy duty record STA 22 single sliding automatic door operator, supporting a 240kg aluminium framed sliding door, 2400mm high x 3000mm wide in a black powdercoat finish and three clear laminated glass panels..

Despite the heavy weight of the sliding panel, the door operation is fast, smooth, quiet and safe (as shown in the YouTube video).

With the large single sliding door opening into a wall cavity, the operator was custom built to ensure all key components are easily accessible for future servicing requirements, with additional access panels built into the wall also provided.

The STA 22 is record's premium automatic sliding door and features a reinforced sliding track profile, dual motor drive system and high quality track wheels to ensure consistent and reliable operation for many years.

The operators are custom built at record's Campellfield factory using Australian sourced extruded aluminium profiles and record's Swiss manufactured high quality door components.

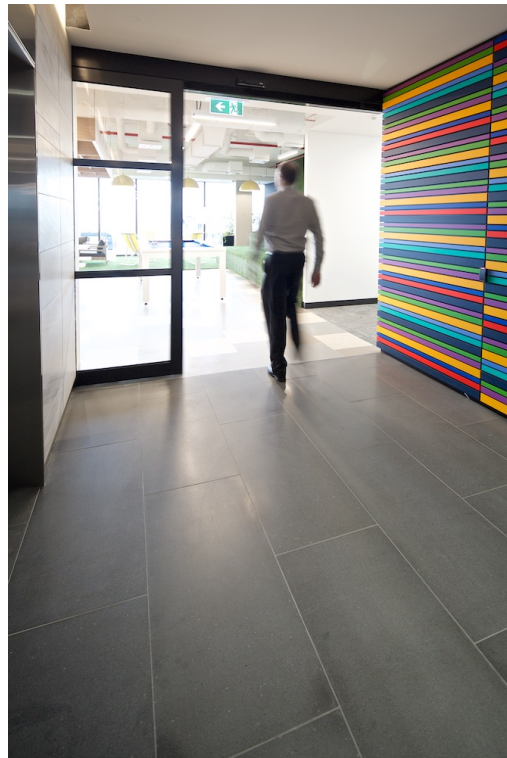
Level 20, 567 Collins Street, Melbourne

Case Study



Level 20, 567 Collins Street, Melbourne

Case Study



Level 20, 567 Collins Street, Melbourne

Case Study

