

# Deloitte Centre. Auckland

## Case Study



For the main entrance to the Deloitte Centre, built in 2009 at 80 Queen Street, Auckland, is a record Crystal Series revolving door.

To complement an impressive cable truss entry screen, the architects, Woods Bagot, worked with record Automatic Doors to develop a custom made Crystal Series revolving door that, for the first time, featured spider fittings to support the curved sidewalls, as well as the glass roof.

# Deloitte Centre. Auckland

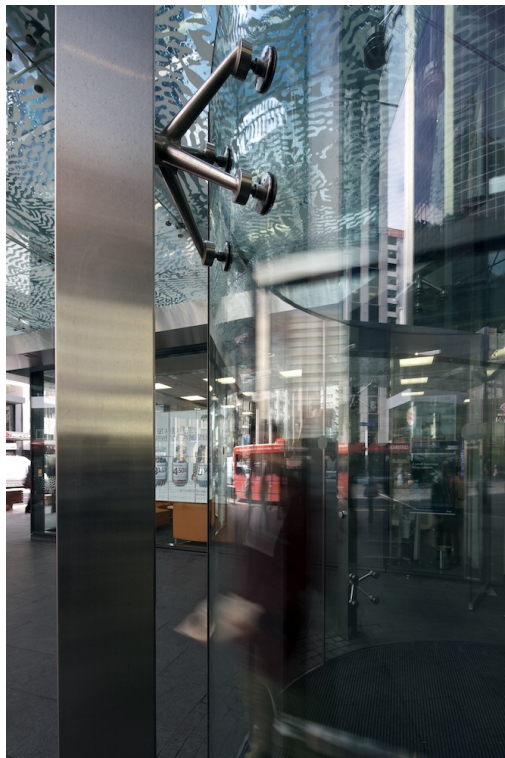
## Case Study





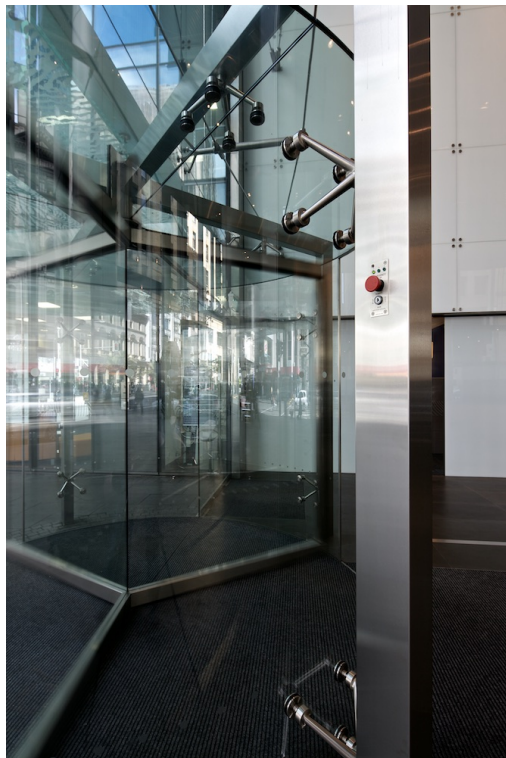
# Deloitte Centre. Auckland

## Case Study



# Deloitte Centre. Auckland

## Case Study



# Deloitte Centre. Auckland

## Case Study

