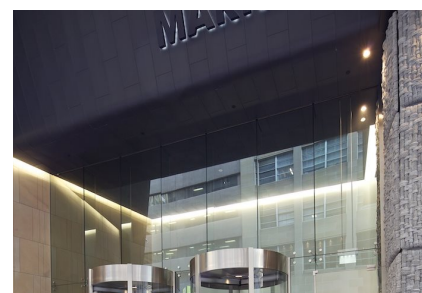
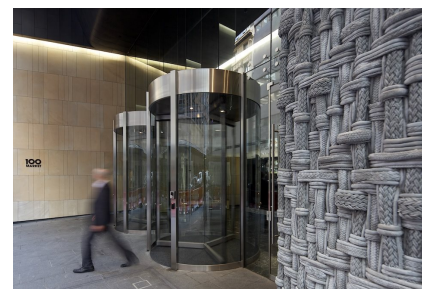


100 Market Street, Sydney

Case Study



As part of the \$1.2 billion redevelopment of the West end Sydney site, bound by Pitt Street Mall, Market Street and Castlereagh Street, the existing 10 storey commercial tower at 100 Market Street undertook a significant refurbishment.

Completed in 2010, this refurbishment entailed the pre-cast concrete facade being removed and replaced with a new high performance glass facade, new interior fit out to all floors, which included modified floor plates with new light wells to increase natural light and a new frameless glass assembly to the main entry with two Fullview Series revolving doors.

At 2400mm diameter and 3420mm high these finished stainless steel clad revolving doors provide a striking and tall entrance feature to complement the frameless glazing and feature wall claddings on either side.

100 Market Street, Sydney

Case Study



100 Market Street, Sydney

Case Study

