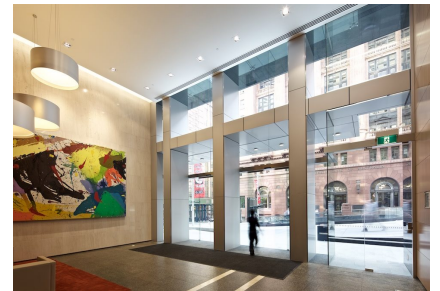
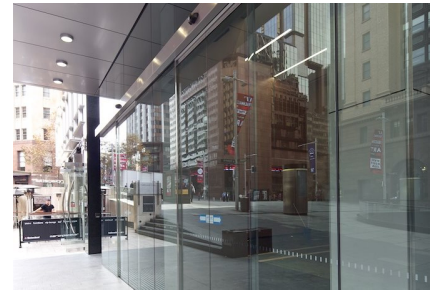


# 39 Martin Place, Sydney

## Case Study



39 Martin Place, positioned in the heart of the banking and legal precinct in Sydney, was built in 1972 and in 2011 undertook its second major refurbishment. The main component of these works was the new ground floor entrance from Martin Place, featuring two AGP Record STA 20 automatic sliding door operators with a low profile 110mm high stainless steel clad pelmet.

# 39 Martin Place, Sydney

## Case Study



# 39 Martin Place, Sydney

## Case Study



# 39 Martin Place, Sydney

## Case Study

