

record Automatic Doors



PRODUCT PORTFOLIO

ABOUT

record Automatic Doors is a company endowed with an unequalled combination of industry experience through the acquisition of three successful Australian door companies:

- AGP Door Systems - Australia's leading brand of revolving doors, designed and made in Sydney, for over 25 years.
- Doorways Pty Ltd – Australia's leading distributor of quality automatic door systems, based in Melbourne, for over 20 years.
- Advanced Automatic Door Solutions – One of Sydney's leading quality automatic door service providers.

Today, record is represented throughout Australia and New Zealand by our own branches and a team of experienced Sales and Service Agents.

With record you can be assured of automatic door products of the highest quality, supplied by a company with local knowledge and experience, with the backing of one of Europe's largest and most successful door companies since 1953.

The agta record Group is among the world's leading manufacturers of automatic door systems. Group headquarters are located in Fehraltorf, Switzerland, where the company produces and supplies high-quality products to its global markets via operations in 17 countries with numerous subsidiaries and more than 200 agencies.

record's Swiss engineered drive units offer quiet, consistent and reliable operation which, combined with record Australia's expertise and experience in providing quality service to our industry for many years, makes record the ideal business partner for your projects.

record's automatic doors range of consists of:

- SLIDING – single, bi-parting, telescopic, prismatic and curved, with a broad weight range from light to heavy doors and all with heavy duty operation capacity and backed by certification to the most stringent performance and safety testing.
- SWING – available in full power, low energy, inverse and fire resistant models with overhead transom, door mount and under floor drives to suit a range of applications and with world renowned performance and near silent operation.
- BI-FOLDING – ideal for automating entrances in restricted spaces or where fast opening and closing times are required, such as at airport and security installations throughout Australia.
- REVOLVING – record has been the Australian market leader in revolving doors for over 25 years, manufacturing bespoke high quality doors in it's Sydney factory, with access to doors by record's European subsidiary, Blasi.





Please click on any of the images or link boxes for further information via our website or social media pages

LINKS:

-  [WEBSITE](#)
-  [INSTAGRAM](#)
-  [YOUTUBE](#)
-  [LINKEDIN](#)

this page **STA 20 & FULLVIEW** 201 Kent Street, Sydney [2018]
cover page **HYBRID & DFA 127** 140 Sussex Street, Sydney [2019]



LINKS:

STA 20

STA 21

STA 22

record's linear automatic sliding door operator range are part of the record System 20 and this allows record to offer a wide range of operator models, at various door leaf weight capacities and price points, that share many of the same electrical components.

The result of this uniformity is quicker assembly time, enhanced operational safety and reliability, and lower service and maintenance costs.

The STA 20 and 21 operators use the same track and pelmet system, with standard 160mm and low profile 110mm pelmet heights available with door leaf weights up to 200kg.

The STA 22 operator offer a door leaf weight capacity of 300kg in a relatively slimline pelmet height of 200mm.

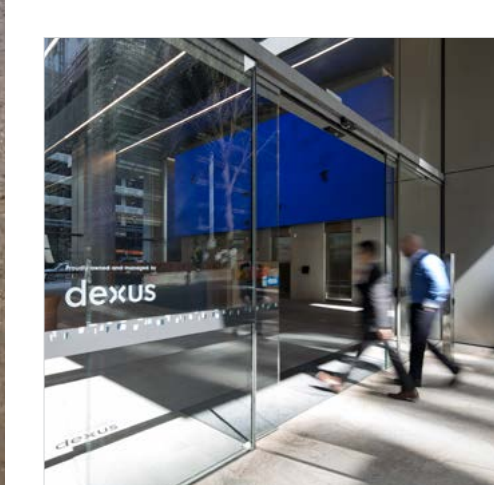
All sliding door operators are made to order in record's Sydney and Melbourne factories, using Swiss manufactured electrical components and Australian extruded aluminium profiles.



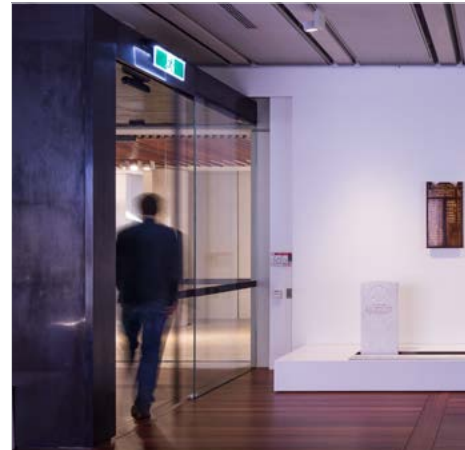
STA 21 101 Miller Street, North Sydney [2018]



STA 22 555 LaTrobe Street, Melbourne [2017]



STA 20 100 Mount Street, North Sydney [2019]



STA 20 347 Kent Street, Sydney [2019]





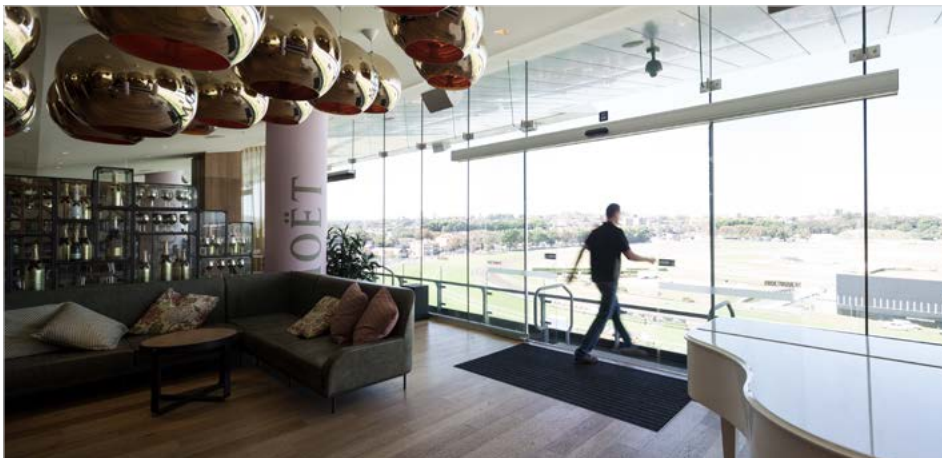
STA 20 275 Kent Street, Sydney [2019]



STA 22 Level 20, 567 Collins Street, Melbourne [2017]



STA 20 Level 16, Tower 4, Collins Square, Docklands [2017]



STA 20 Royal Randwick Racecourse, Randwick [2018]



STA 20 442 St Kilda Road, Melbourne [2019]



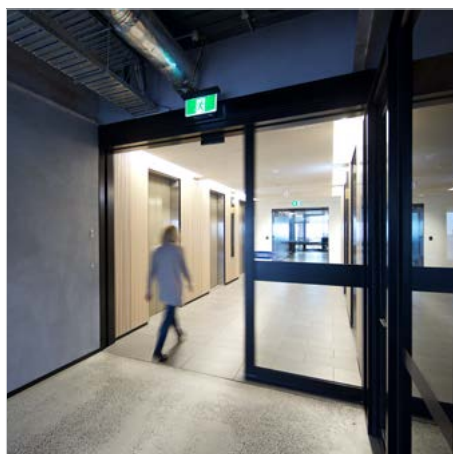
STA 20 Ferrari Maserati Sydney, Waterloo [2017]



STA 20 Oran Park Library, Oran Park [2018]



STA 20 Anzac Memorial, Hyde Park, Sydney [2019]



STA 22 Architectus, 385 Bourke Street, Melbourne [2017]



STA 21 NDIS Office, 67 Albert Avenue, Chatswood [2017]

To double the number of door wings in an automatic sliding door entrance, record's TSA range of telescopic sliding door operators simply takes the STA linear sliding door system a second door track mounted in front.

This allows the TSA 20 and TSA 22 telescopic operators to share the same slimline pelmet profiles of the STA operators, ensuring that on projects where a mix of standard and telescopic operators are required, the same transom and pelmet profile height can be maintained throughout.

And by being part of record's System 20, the TSA range of telescopic door operators shares the same electrical and mechanical components as our other sliding door models.

The TSA 20 offers door leaf weights up to 130kg and the TSA 22 up to 170kg per door leaf.

TSA 22 Stockland Wendouree Shopping Centre, [2018]



LINKS:

TSA 20

TSA 22



TSA 22 Northpoint, North Sydney [2018]



TSA 20 Level 32, 100 Barangaroo Avenue, Sydney [2019]



TSA 20 Broadway Shopping Centre, Broadway [2017]



TSA 20 Vibe Hotel, 171 Pacific Hwy, North Sydney [2018]



TSA 22 Ferrari Maserati Sydney, Waterloo [2017]



TSA 22 Stockland Wendouree Shopping Centre, [2018]



TSA 20 100 Miller Street, North Sydney [2018]



LINKS:

RST 20

R 61

Curved sliding doors are ideally suited to lending any façade a real touch of style. They provide the unsurpassed elegance of a revolving door, but are more flexible with the practical benefits of providing disabled access and emergency egress requirements. This type of door can be integrated into any curved space, and be curved inwards or outwards.

With record's ability to custom design and build a freestanding structure to support the curved operator, just like a revolving door, we are able to work with architects and clients to provide a unique entrance feature that complements the surrounding façade.

The framework of record's RST 20 curved operator is the same as our linear STA 20 model, enabling us to provide a wide range of models for the market, all of which are based on the same platform, leading to quicker assembly, high reliability and with lower service and maintenance costs.





R 61 9 Castlereagh Street, Sydney [2011]



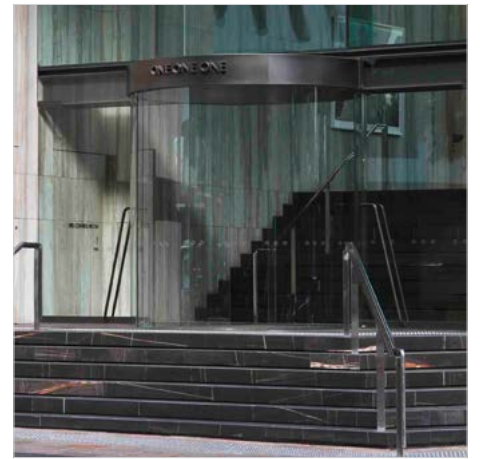
RST 20 2 Elizabeth Plaza, North Sydney [2012]



RST 20 Racing Victoria, 400 Epsom Road, Flemington [2018]



RST 20 Quay Central, 95 North Quay, Brisbane [2009]



RST 20 111 Eagle Street, Brisbane [2013]



RST 20 Grosvenor Place, Sydney [2009]



RST 20 Novotel Auckland Airport, Auckland [2012]



LINKS:

DFA 127

record DFA 127 is a transom mounted automatic swing door operator, characterised by sophisticated technology, compact design and smoothness of operation.

With different linkage arm design and spindle extensions, the operator is suitable for a broad range of design applications to suit existing site constraints, or architectural preferences.

The enclosure height is only 85mm and comes standard with a brushed stainless steel cover, or optional aluminium in a powdercoat or anodised finish.

When the drive motor operates to open a door, it simultaneously tensions a spring integrated within the housing. The closing movement is power driven with assistance from energy stored in the spring to counteract wind load forces.

This design ensures safe operation of the door is also possible when used manually, or in the event of a power failure.





DFA 127 NDIS Office, 67 Albert Avenue, Chatswood [2017]



DFA 127 Sofitel Sydney, Darling Harbour [2017]



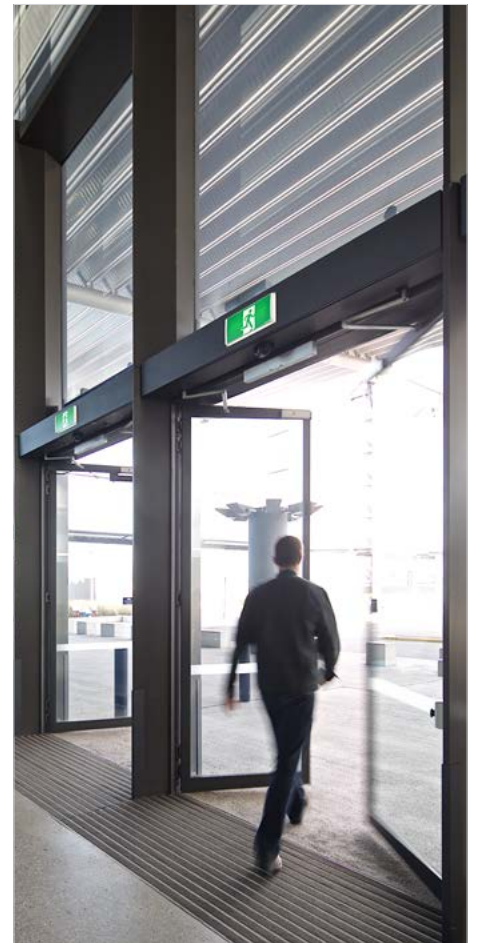
DFA 127 360 Collins Street, Melbourne [2017]



DFA 127 Commonwealth Bank Place, Sydney [2011]



DFA 127 White Bay Cruise Terminal, Rozelle [2013]



DFA 127 White Bay Cruise Terminal, Rozelle [2013]

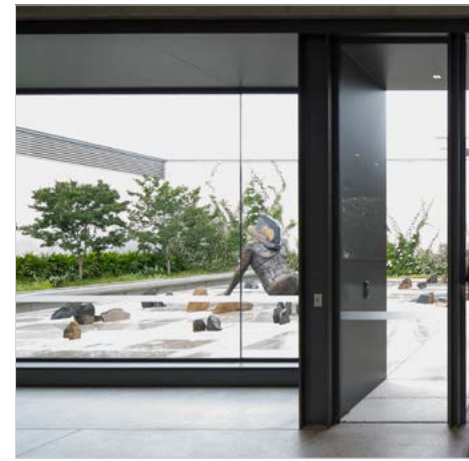
Offering greater flexibility in entrance system design than alternative transom mounted operators, the record C 127 concealed direct pivot automatic swing door operator is ideal for swing doors within frameless glass facades or where overhead space is limited.

The C 127 is extremely quiet, enabling it's use for the most diverse of applications, including internal office fitouts and ground floor lobby disabled access entries where large frameless glass doors weighing up to 400 kg, subject to width, can be operated.

When mounted in the floor, a minimum setdown of 143mm from finish floor level is required. Access to the operator can be via a stainless steel cover or a flooring insert to match the surrounding paving.



C 127 200 George Street, Sydney [2015]



C 127 1 Cochranes Road, Moorabbin [2019]



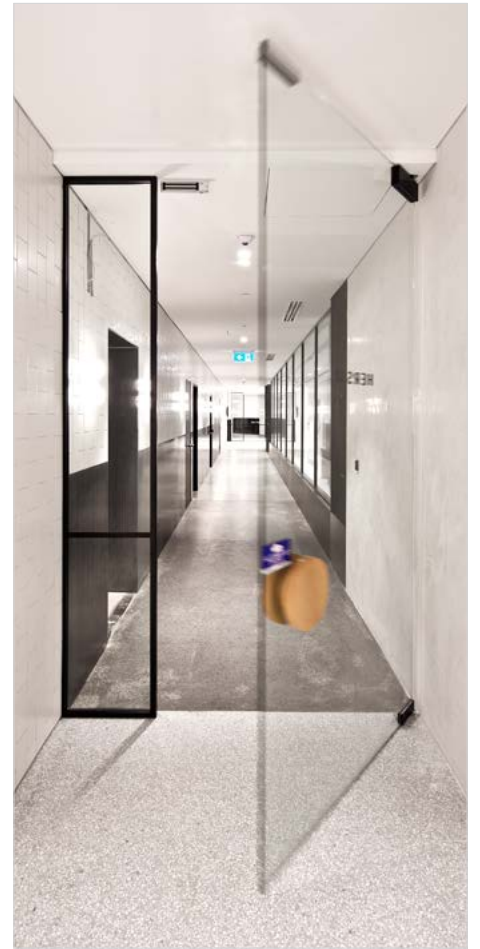
C 127



C 127 201 Kent Street, Sydney [2018]



C 127 60 Martin Place, Sydney [2019]



C 127 End of Trip, 259 George Street, Sydney [2018]



C 127 Level 42, 259 George Street, Sydney [2017]



C 127 35 Dalmore Drive, Caribbean Park, Scoresby [2017]



C 127 100 Mount Street, North Sydney [2019]



C 127 Dangrove Art Storage Facility, Alexandria [2018]

If there is only limited space for door leaves to open in a narrow passage entrance area, which will prevent the use of sliding doors, an automatic folding door provides a good solution as it's design maximises the available passage width to retain almost the full opening available.

They are also effective in exposed entrances, where automatic swing doors would not be effective operating in high winds.

In Australia, record bi-fold doors are used in many domestic airport terminals as the physical barrier in a secured exit lane system, allowing passengers to easily leave the secured airside of the terminal, without allowing unscreened passengers to enter from the landside area.

The reliability and speed of operation of the FTA 20 makes them an ideal entrance system for this and many other security applications.

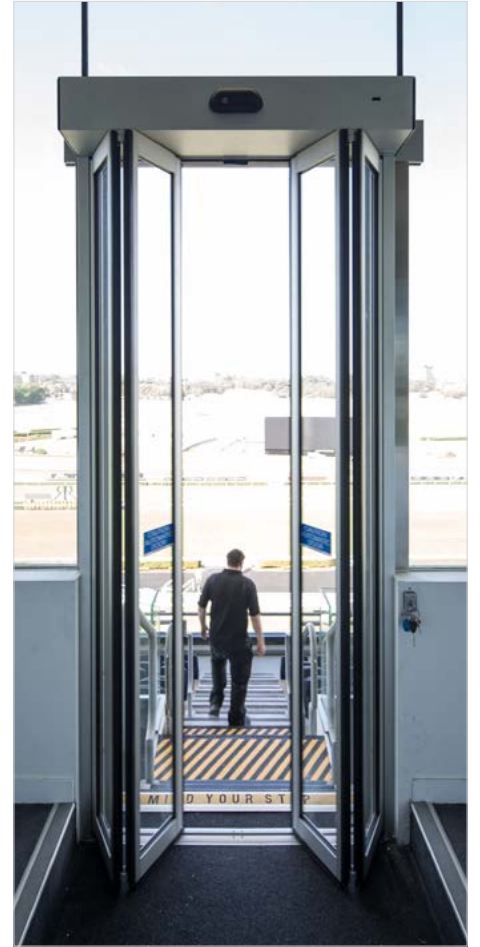


LINKS:

FTA 20



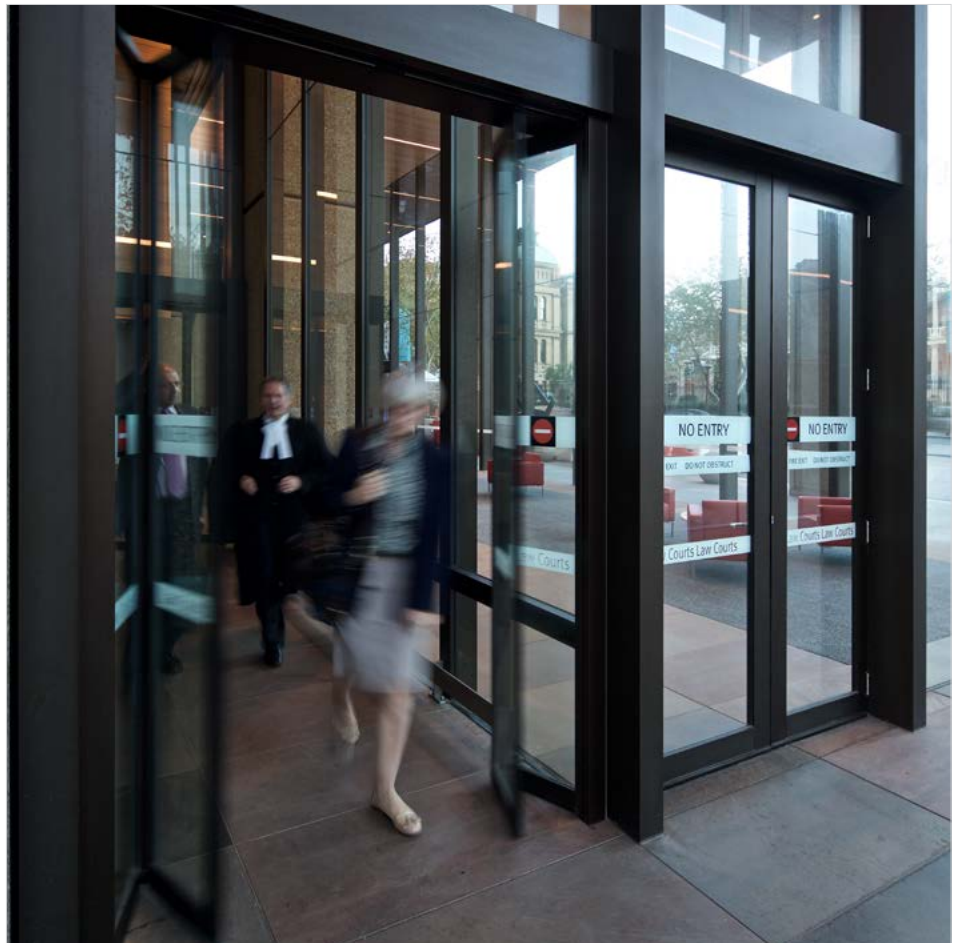
FTA 20 One Shelley Street, Sydney [2009]



FTA 20 Royal Randwick Racecourse, Randwick [2018]



FTA 20 St Vincent's Private Hospital, Melbourne [2017]



FTA 20 Queens Square Law Courts, Sydney [2014]



LINKS:

DIAMOND

HYBRID

FULLVIEW

CUSTOM

CRYSTAL



Custom built and suitable for all architectural requirements, record revolving doors are available in a range of styles, sizes, finishes and special features to meet the unique requirements of each project.

The Fullview, Hybrid, Diamond, Crystal and Custom Series doors are fully Australian designed and manufactured and share the same frameless glass centre rotating carousel design and heavy duty drive system as developed by the original designer and manufacturer, AGP Door Systems - the leading revolving door manufacturer since the 1990's. record acquired this business in 2014.

Unlike other revolving doors on the market, record doors feature safety sensors that are fully incorporated into the door design, making them effectively hidden to the untrained eye and ensuring that the safety sensors, necessary to prevent the door carousel from hitting an obstruction, do not detract from the doors stylish appearance.



CUSTOM Sofitel Sydney, Darling Harbour [2017]



DIAMOND 60 Martin Place, Sydney [2019]

DIAMOND 839 Collins Street, Docklands [2019]



DIAMOND One Melbourne Quarter, Docklands [2018]



FULLVIEW Casselden, 2 Lonsdale Street, Melbourne [2012]



HYBRID 140 Sussex Street, Sydney [2019]



HYBRID 20 Customhouse Quay, Wellington [2018]



FULLVIEW Melbourne Law School, Carlton [2018]



DIAMOND Brookfield Place Tower 2, Perth [2015]



HYBRID 595 Collins Street, Melbourne [2019]



CRYSTAL Collins Square Tower 1, Docklands [2013]

Contact

→ **Headquarters**

agta record ltd - Allmendstrasse 24 - CH-8320 Fehraltorf, Switzerland - Tel.: +41 44 954 9191

→ **Melbourne**

117 Scanlon Drive, Epping VIC 3076 – Tel.: 1300 80 44 38

→ **Sydney**

30 Prince William Drive, Seven Hills NSW 2147 – Tel.: 1800 67 44 08

e-mail: info@recorddoors.com.au – www.recorddoors.com.au – www.record.group

